

Cylinder Magnetic Separator

Cylinder Magnetic Separator – SCXH Series

Cylinder Magnetic Separator is ideal for the removal of tramp type contamination, for example nuts, bolts, staples etc., from gravity and pneumatically conveyed pipelines. The unit is designed to prevent tramp iron from damaging expensive process machinery. It is available for grainy cereals, with a buffer to reduce flow speed and enhance the capacity of filtering Fe particles.

Benefits

Strong magnetic filter bars, high catching ability, large coverage area, without zero magnetic field.

Mounted on the door with easy-cleaning version, extract the magnetic core to wipe off the Fe particles conveniently and efficiently.

Quick-wear parts are replaceable.

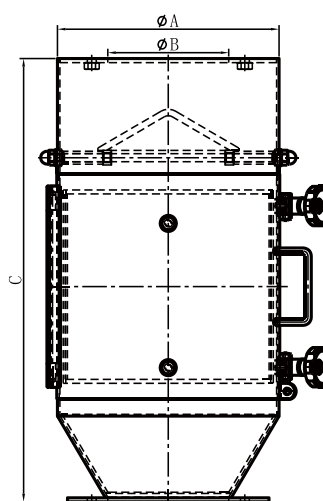
Technical data

Magnetic performance: 7'000-9'000

Materials of housing and other parts: 304 stainless steel/316 stainless steel

Surface finish: Sand blasting/Powder painting

PATENTED PRODUCT
ZL 2011 1 0319437.8



Model No.	Capacity (t/h)	Inlet (mm) ΦB	Dimension (mm)	
	Wheat r=0.75		ΦA	C
SCXH1016	8	100	159	400
SCXH1220	12	120	200	450
SCXH1222	15	120	219	450
SCXH1525	21	150	250	500
SCXH1527	25	150	273	550
SCXH1530	30	150	299	550
SCXH2032	50	200	325	550
SCXH2035	60	200	350	600
SCXH2337	72	225	375	650
SCXH2540	89	250	400	700
SCXH2545	113	250	450	750
SCXH3050	195	300	500	800



Beijing OeMag International Co., Ltd

Tel: +86-10-67609550; Fax: +86-10-67609565; E-mail: oeimag@oeimag.com